

## Call Fister first for all your Precast Form chemicals

- Microgel - Acid Etching Gel
- Armorgard 505 - Epoxy Form Coating
- K 100 - Epoxy Form Repair Compound
- Q2 - Architectural Form Release
- Form Seal - 1 part Urethane Form Coating
- Fister 20% Acrylic Sealer

Fister also stocks a complete line of  
products and accessories for your  
precast operation including:

- |                        |                 |
|------------------------|-----------------|
| ■ GE Caulks            | ■ Corner guards |
| ■ Architectural chairs | ■ Panel pads    |
| ■ Standard chairs      | ■ Wheel spacers |

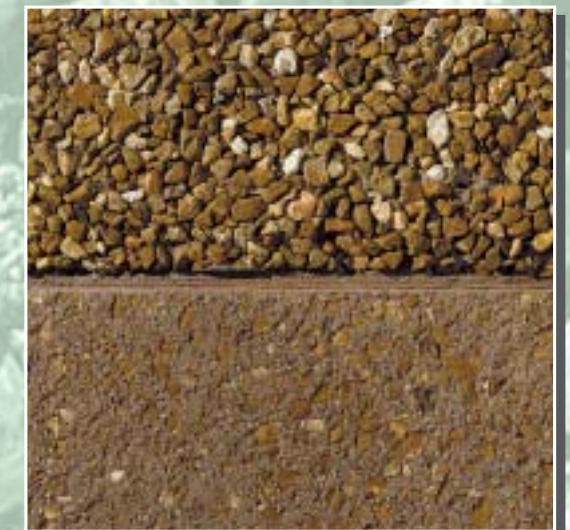
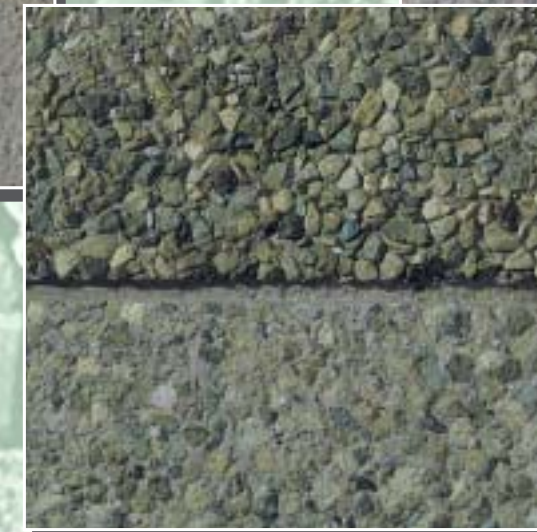
### **FISTER, INC.**

Call Fister, Inc. at: 1-800-339-9534  
or fax your order to: 1-770-587-2321

[www.fisterquarries.com](http://www.fisterquarries.com)

Three conveniently located service centers  
Atlanta, GA • Chicago, IL • Dallas, TX

# **FISTER, INC.** **Expose It** *Retarder reference guide*



**A better finish starts with Fister, Inc.**

# Retarder Reference Guide

Expose Aggregate Retarders	Expose It Form Retarder	Microgel	Expose It Surface Retarder	Expose It Surface Retarder Weekend Cast	Expose It Retarder Paper	Expose It Release
Description/ Advantage	For horizontal and vertical castings, V.O.C. compliant long placement and vibration time.	Apply to fresh damp 'cured' concrete. Re-apply if etch is not deep enough.	Apply to freshly poured concrete approx. 30 - 40 minutes after concrete has been placed. Cover with black plastic.	Apply to freshly poured concrete. Leave over week-end before washing. Cover with black plastic.	Ideal for stepping stones.	To be used under form retarder only to facilitate transfer of retarder from form to panel.
Coverage Rate	300 sq. feet per gal.	200 sq. feet per gal.	125-150 sq. feet per gal.	125-150 sq. feet per gal.	Rolls/Square/Rounds	350 sq. feet per gal.
Method of Application	Spray, brush or roller	Broom/scrub brush	low pressure sprayer	low pressure sprayer	Hand placed	Mop or roller
Drying Time	20 minutes	N/A	N/A	N/A	Already dry on paper	10 - 15 Minutes
Retarder Color	9 colors available	White gel	Red & purple	Blue	5 colors available	Clear
Activation Time	45 - 60 minute	At time of application	At time of application	At time of application	At time of application	N/A
Max. Conc. Temp.	150° F	N/A	110° F	110° F	110° F	150° F
Base	Solvent- V.O.C.	Acid	Water	Water	Water	IPA

Retarder Color	Aggregate Size
Blue	Acid etch finish or sandblast aid.
Brown	>1/4"
Green	1/8"
Yellow	1/8" - 1/4"
Pink	1/4" - 3/8"
Grey	3/8" - 1/2"
White	1/2" - 5/8"
Orange	5/8" - 3/4"
Violet	3/4" - 1"

Special notes for Expose It	Form Retarders
1.) Depth of etch is determined by PSI of concrete. 2.) White cement will etch lighter than grey cement with the same retarder. 3.) .38 - .40 water/cement ratio is recommended 4.) Alkine water activated.	5.) While retarder is still wet , apply a coat in vertical and horizontal direction. 6.) Expose It form retarder will hold a straight line.

Call Fister, Inc. at: 1-800-339-9534  
 or fax your order to: 1-770-587-2321  
[www.fisterquarries.com](http://www.fisterquarries.com)



Three conveniently located service centers  
 Atlanta, GA • Chicago, IL • Dallas, TX